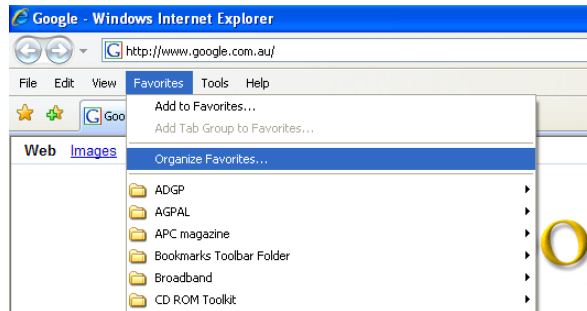
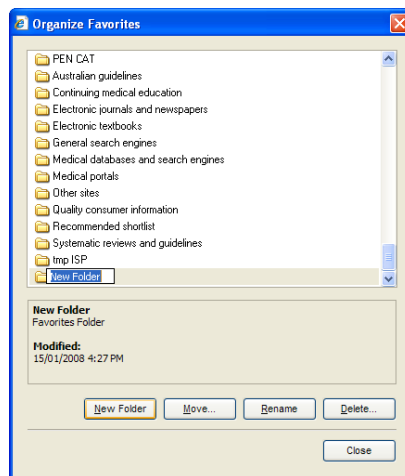


Instructions for Importing Favorites into Internet Explorer

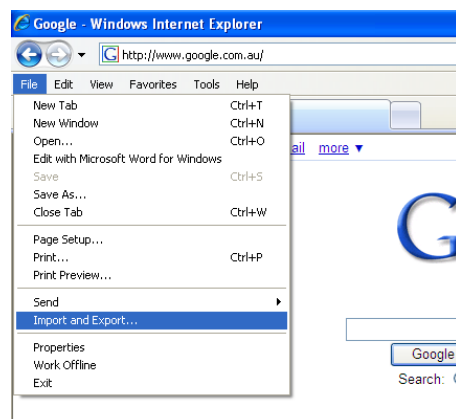
1. Copy the file “Internet Resources for GPs” to your desktop or into your My Documents folder
2. Open Internet Explorer.
3. Select Favorites > Organise favorites



4. Click on New Folder, and type “Internet Resources for GPs” over New Folder in the highlighted box and click Close.



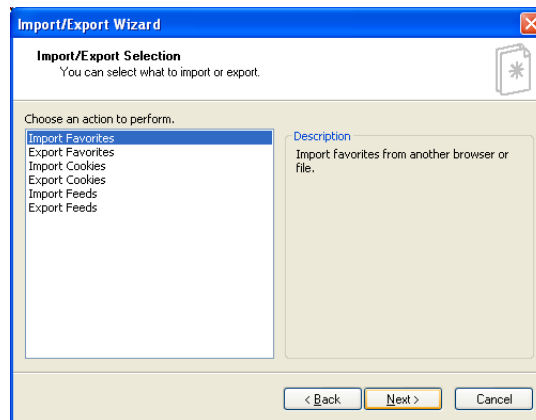
5. Select 'File' from the menu, then 'Import and Export...'



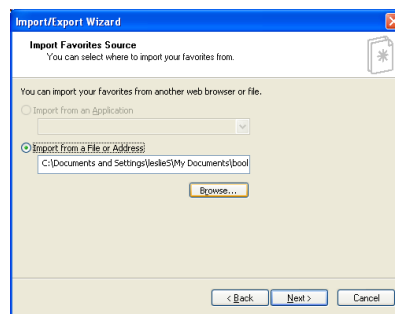
6. The Import Export Wizard will open, click 'Next'.



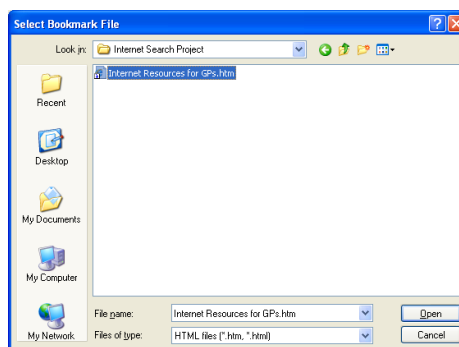
7. Select 'Import Favorites' and click 'Next'.



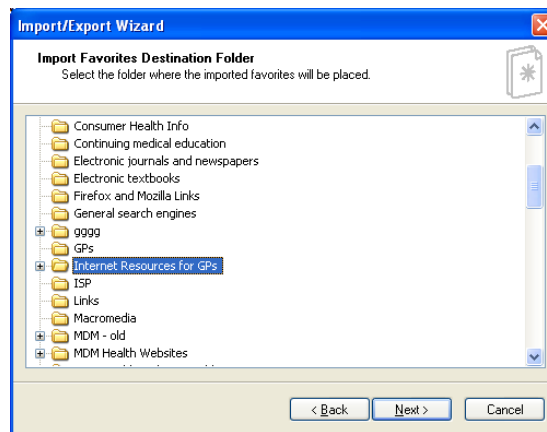
8. Select 'Import from a File or Address' and click on the Browse button to locate the "Internet Resources for GPs" file you save earlier.



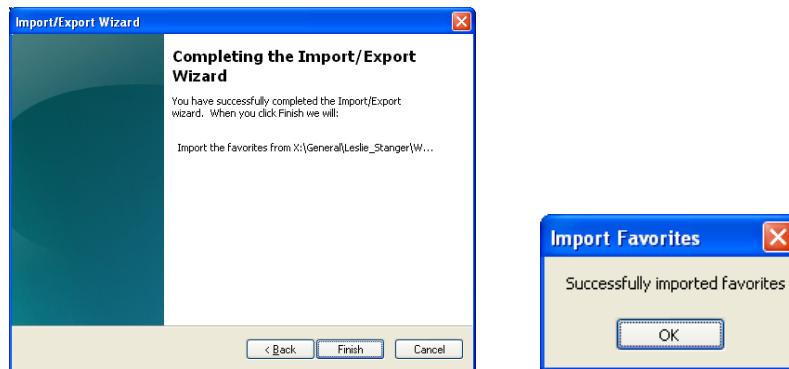
9. Click on the file once to highlight it, and click Open. You will be returned to the Import/Export Wizard, click 'Next'.



10. Click on the folder under Favorites called Internet resources for GPs to highlight it, and click Next.



11. Select Finish and you should see a message indicating that the import was successful.



12. Internet Resources for GPs should appear as a folder under your Favorites with a number of subfolders containing useful websites.

